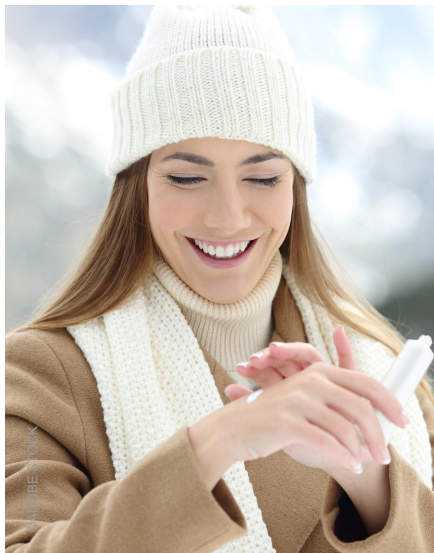




SKIN CARE

AS40093A | MY ICONIC HAND CREAM



**NATURALITY
PROFILE**
according to
ISO 16128 norm

Deep Moisturizing
—
Repair
—
30% Emollients

LZ201603 - 2005

A	Aqua/Water Glycerin 1,3-butylene Glycol SOLAGUM™ AX	Up to 100% 3.00% 3.00% 0.30%
B	MONTANOV™ 202 KARITE CP* EMOGREEN™ L19	4.00% 20.00% 10.00%
C	SEPINOV™ EMT 10	0.70%
D	AQUAXYL™ Rosmarinus Officinalis (Rosemary) Leaf extract Phenoxyethanol (and) Ethylhexylglycerin Ethylhexylglycerin and Caprylyl Glycol Fragrance	1.50% 0.20% 0.70% 0.30% 0.20%
With WESOURCE		

White Cream / Packaging: Jar
Challenge Test - Criteria A

pH: 5.8 / **VISCOSITIES:** **1M at RT:** 132 000 mPa.s Brookfield LV4-6

Recovery at RT (after 1M at 45°C): 126 000 mPa.s Brookfield LV4-6

STABILITY: Stable 1M at RT, 45°C, -18°C and cycles -5°C/+40°C.

FORMULATION ADVICES / Silverson rotor-stator

Weigh phase A and B and heat them to 85°C. Add phase C to B, and then add phase A to phase (B+C), homogenize it by Silverson rotor-stator 4000 rpm for 4 minutes. Cool down under anchor stirring 100 rpm without water bath for 10 minutes and followed with water bath cooling for another 10 minutes. Add phase D one by one below 45°C and stir till uniform. Stop stirring at 30°C.

This hand cream is an excellent skin moisturizer and protector thanks to EMOGREEN™ L19 and 20% SHEA BUTTER. It will repair even the most damaged hands.

MONTANOV™ 202 is a glycolipidic emulsifier. It promotes liquid crystals, playing a role in **maintaining skin moisturization over time**. It delivers a light and **evanescent skin feel**.

(Arachidyl Alcohol and Behenyl Alcohol and Arachidyl Glucoside)

SEPINOV™ EMT 10 stabilizes the high percentage of oily phase (30%).

It imparts satiny and **fresh skin feel**.

(Hydroxyethyl Acrylate / Sodium Acryloyldimethyl Taurate Copolymer)

SOLAGUM™ AX, gum from natural origin, **stabilizes the emulsion and leaves a non-sticky finish**. (Acacia Senegal Gum and Xanthan Gum)

EMOGREEN™ L19 bio-sourced & biodegradable emollient, **facilitates the application of the hand cream by bringing gliding & good playtime**.

It gives a soft & **dry finish**. (C15-19 Alkane (Plant-based & Renewable))

KARITE CP* cold pressed and solvent-free shea butter (Butyrospermum Parkii (Shea Butter))

A 100% natural, sensorial emollient with healing and nourishing properties thanks to a very high content of unsaponifiables .

AQUAXYL™ moisturizes and restructures the skin by harmonizing the hydric flow of the skin.

Water reserves are instantly boosted, water circulation is improved in all skin layers and **water loss is reduced**.

(Xylitylglycoside and Anhydroxylitol and Xylitol)

ADDITIONAL INGREDIENTS: Glycerin - Pricerine 9091 (KARRY) / BUTYROSPERMUM PARKII (SHEA BUTTER); Karite CP (SOPHIM) / ROSMARINUS OFFICINALIS (ROSEMARY) LEAF EXTRACT; Duralax Oxidation management blend NH10 (Kalsec) / Phenoxyethanol (and) Ethylhexylglycerin: Euxyl PE 9010 (S&M) / Ethylhexylglycerin and Caprylyl glycol: Euxyl SC 10 (S&M) / Fragrance: Frag276148 (Drom)

More informations available on **seppic.com**

*SOPHIM products distributed in North America by Seppic Inc.

seppic

All information contained herein is intended merely to demonstrate the utility of SEPPIC products, and should not be construed as granting license to practice any compositions or methods covered by a patent or a patent application. All information contained in this specific technical documentation is believed to be accurate and has been set up by SEPPIC according to its own prescribed methods and processes. SEPPIC however does not assume any liability or risks involved in the use of its products for the preparation and the assessment of the hereinabove formulation since the condition of use are beyond its control. SEPPIC customer must insure that the duplication of the hereinabove formulation is not infringing any intellectual property rights and that it complies with any regulatory status.

Air Liquide
HEALTH CARE

A company