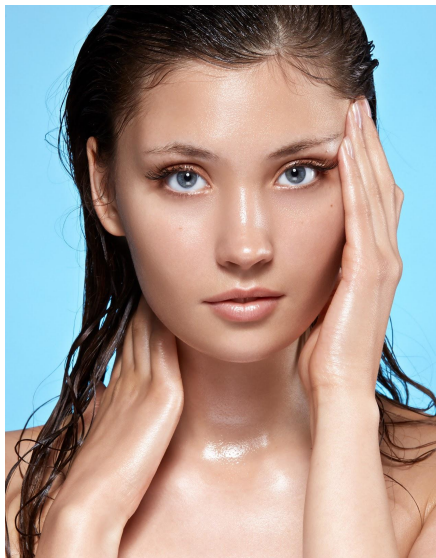




# US20087A | GLASS SKIN GEL

A clear blue-green gel intensely moisturizing for the skin



Immediate and long-term  
moisturization  
—  
Skin smoothness  
—  
Pollution protection

\* Data provide from OECD tests, QSAR calculations, products SDS and literature.

<b>A</b>	Water	Up to 100%
	Aqua (and) Sodium Benzoate (and) Potassium Sorbate	1.00%
	Citric Acid solution 30% PH to 5	0.60%
	<hr/>	
<b>B</b>	<b>SEPIMAX ZEN™</b>	<b>1.20%</b>
<b>C</b>	<b>AQUAXYL™</b>	<b>1.50%</b>
	<b>DUB DIOL*</b>	<b>3.00%</b>
	<b>CODIAVELANE™ BG PF</b>	<b>2.00%</b>
	<b>OLIGOGELINE™ PF</b>	<b>2.00%</b>
<b>D</b>	Fragrance	0.05%
	FD&C Blue No.1 solution 0.1%	0.15%
	FD&C Yellow No.5 solution 0.1%	0.01%
	<hr/>	

With **WESOURCE**

\*Distributed in the US by SEPPIC Inc.

## CLEAR BLUE GREEN GEL / Packaging: Jar

**pH:** 5.0 / **VISCOITIES:** **1M** at **RT:** 25,810 cps; Brookfield LV 64@ 6 rpm / **Recovery at RT (after 1M at 45°C):** 27,800 cps; Brookfield LV 64@ 6 rpm. / **STABILITY:** Passed 3 months @ 45C & RT, 3 F/T cycles

**FORMULATION ADVICE:** Laboratory scale - **300 g - Defloculator**  
Combine phase A, then add phase B ingredient under mixing by using a dispersing blade at 500 rpm, then increase speed to 1500 rpm. when phase B is properly swelled and uniformed, add phase C ingredients one by one and continue to mix to obtain a uniform gel. Add phase D ingredients and mix well.



Cold Process

**Replenish your skin with water and achieve a glass skin effect: naturally glowing and reflecting light.**

*A moisturizing aqueous gel suitable for mix complexion!*

**SEPIMAX ZEN™** creates a crystal clear gel (Polyacrylate Crosspolymer-GI Pre-neutralized powder polymeric thickener with a MAXIMUM resistance to electrolytes, efficient on a wide range of pH from 3 to 8, and able to formulate transparent aqueous gels. It provides a rich, velvet and elegant skin feel.

A great boost of hydration with **DUB DIOL™!** (Methylpropanediol) This multifunctional glycol provides moisturization, maintains high level of hydration while being less tacky than glycerin. Odorless, colorless and hydrophilic, it helps solubilize and enhance fragrance and preservative power: it is ideal for clear formulas!

**AQUAXYL™** boosts hyaluronic acid and ceramides natural content for immediate and long-term hydration (Xylitylglucoside and Anhydroxylitol and Xylitol) Plant-derived sugars that moisturize and restructure the skin by harmonizing the hydric flow of the skin. Water reserves are instantly boosted, water circulation is improved in all skin layers and water loss is reduced.

**CODIAVELANE™ BG PF & OLIGOGELINE™ PF** with their algae association fill and lock moisture in the skin:

**CODIAVELANE™ BG PF** algae extract from the Emerald sea (Aqua/Water and Butylene Glycol and Codium Tomentosum Extract):  
A water soluble active extracted from the "velvet seaweed". It has a high moisturizing power thanks to its richness in marine sugars: real Marine Moisturizing Factors!  
**OLIGOGELINE™ PF** forms a non occlusive film to seal moisture in the skin (Chondrus Crispus Extract): Chondrus crispus extract acting like a second skin. It reduces the TEWL, protects from microparticles and helps to release other actives to the skin over-time.

**ADDITIONAL INGREDIENTS:** Aqua (and) Sodium Benzoate (and) Potassium Sorbate: Euxyl® K 712 (SCHÜLKE) / Fragrance: Cucumber SA-517 (Creative Fragrance) / FD&C Blue No.1 (SENSIENT) / D&C Yellow No.5 (SENSIENT)

**SEPPIC**

All information contained herein is intended merely to demonstrate the utility of Seppic products, and should not be construed as granting license to practice any compositions or methods covered by a patent or a patent application. All information contained in this specific technical documentation is believed to be accurate and has been set up by Seppic according to its own described methods and processes. Seppic however does not assume any liability or risks involved in the use of its products for the preparation and the assessment of the hereinabove formulation since the condition of use are beyond its control. Seppic customer must insure that the duplication of the hereinabove formulation is not infringing any intellectual property rights and that it complies with any regulatory status.

A company  
**Air Liquide**  
HEALTH CARE